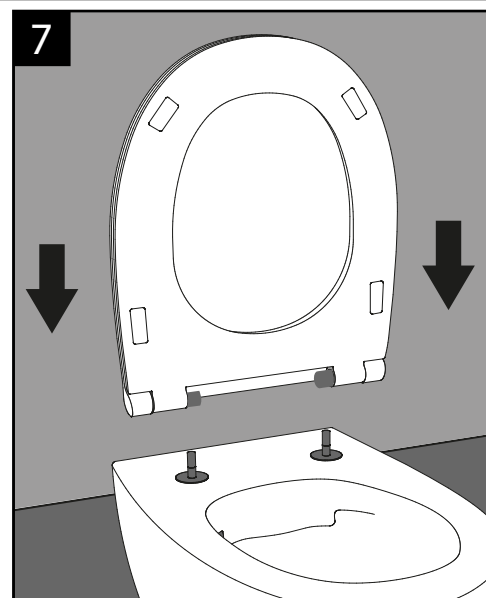
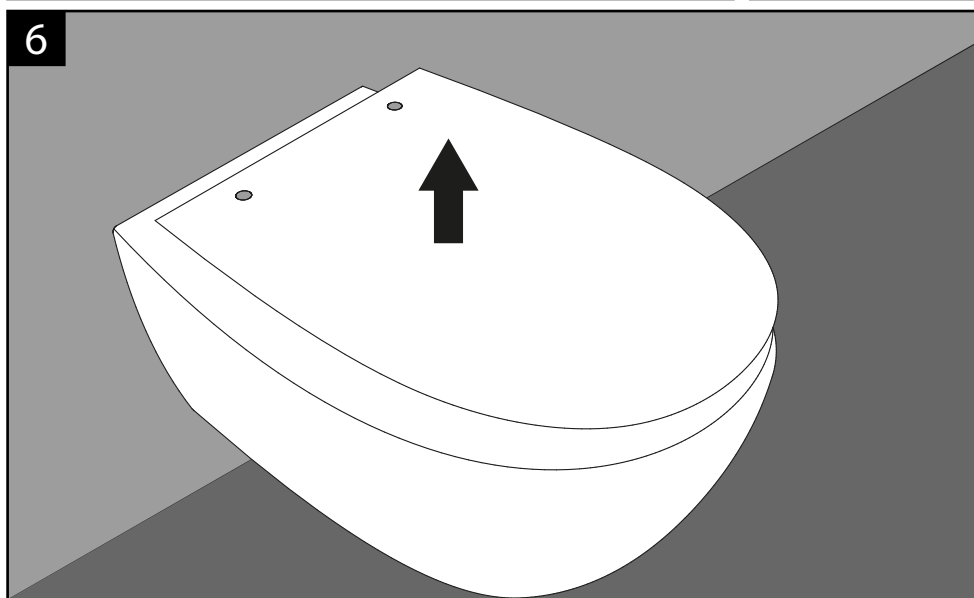
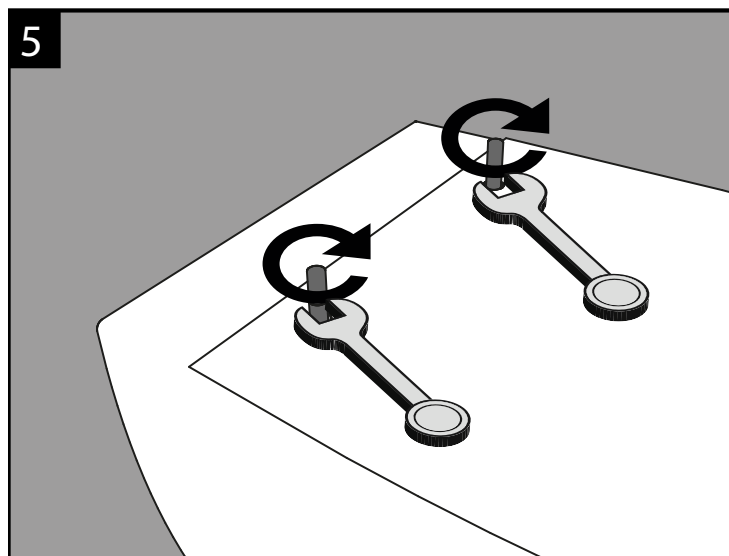
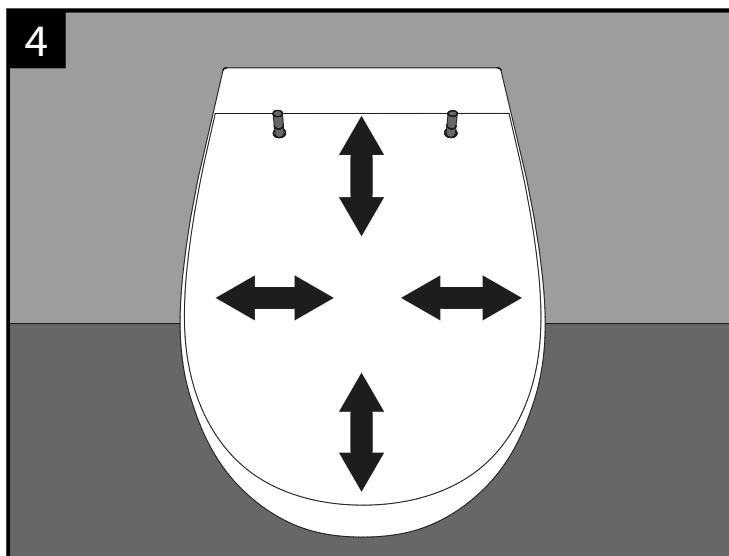
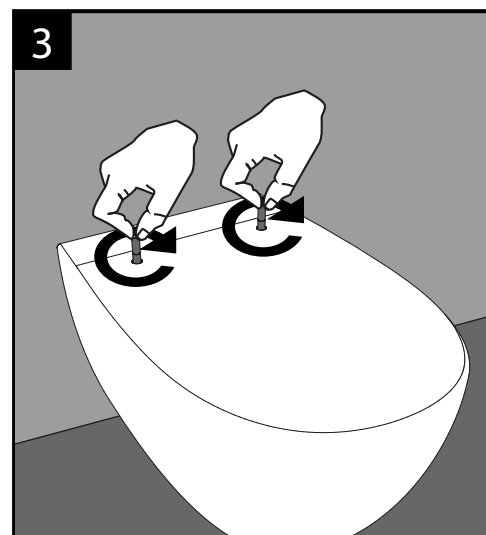
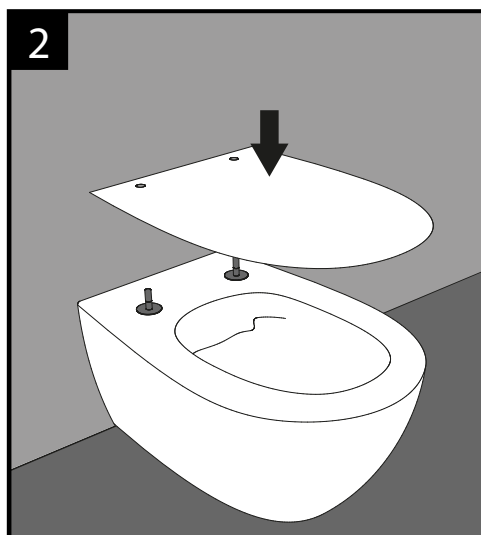
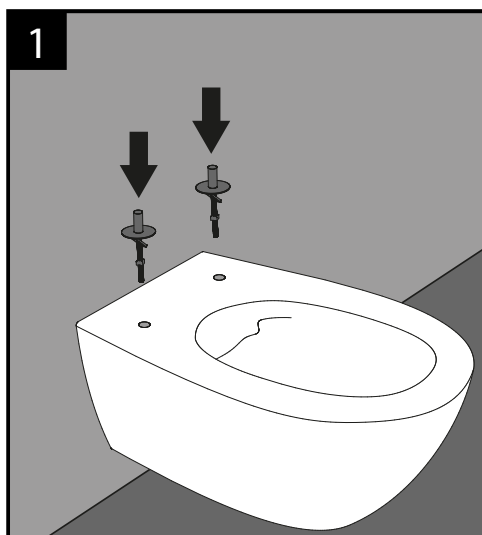




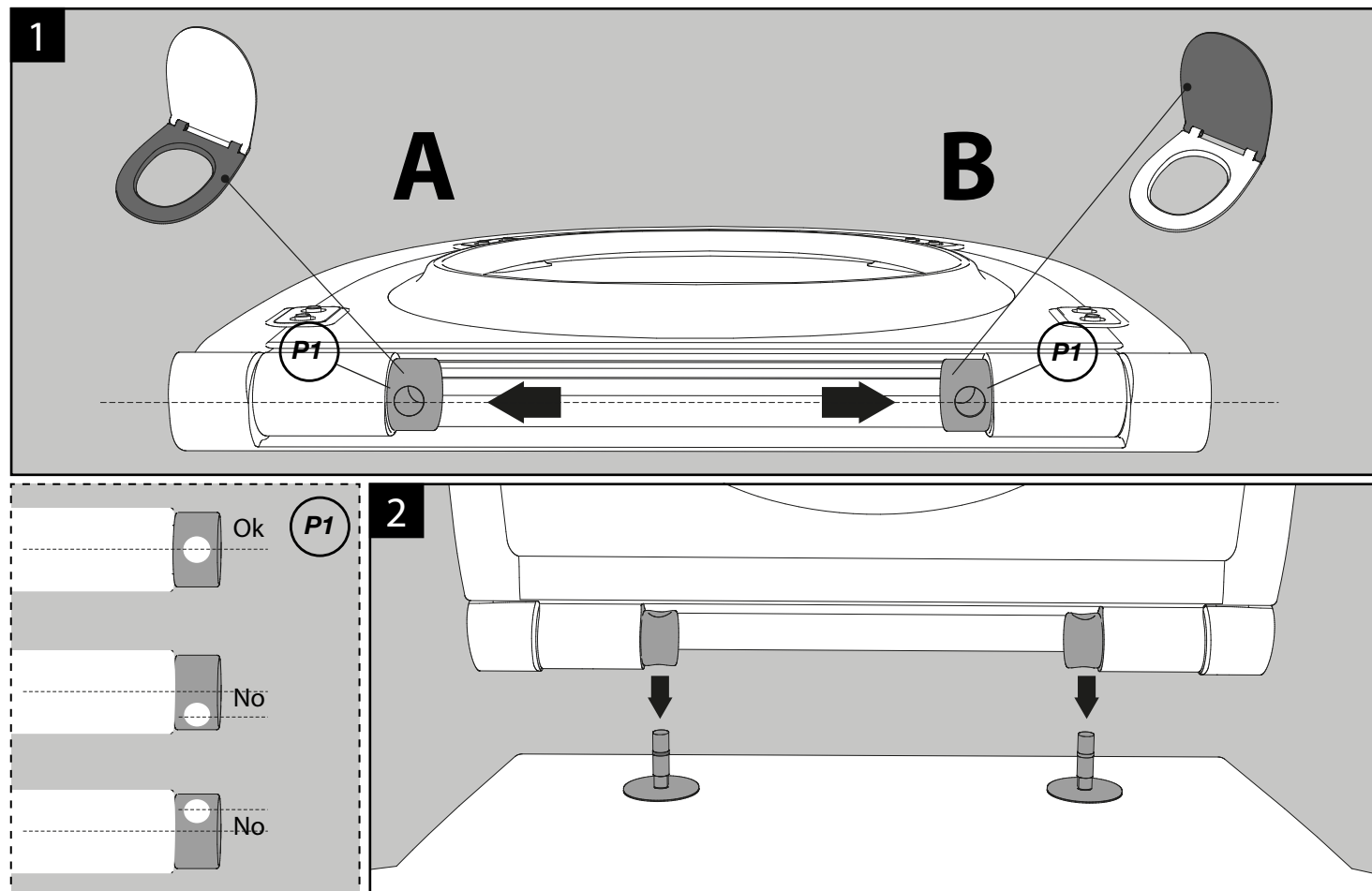
Scansiona il Qr code per il video delle
istruzioni di montaggio

Please scan the QR-code for installation
instructions video

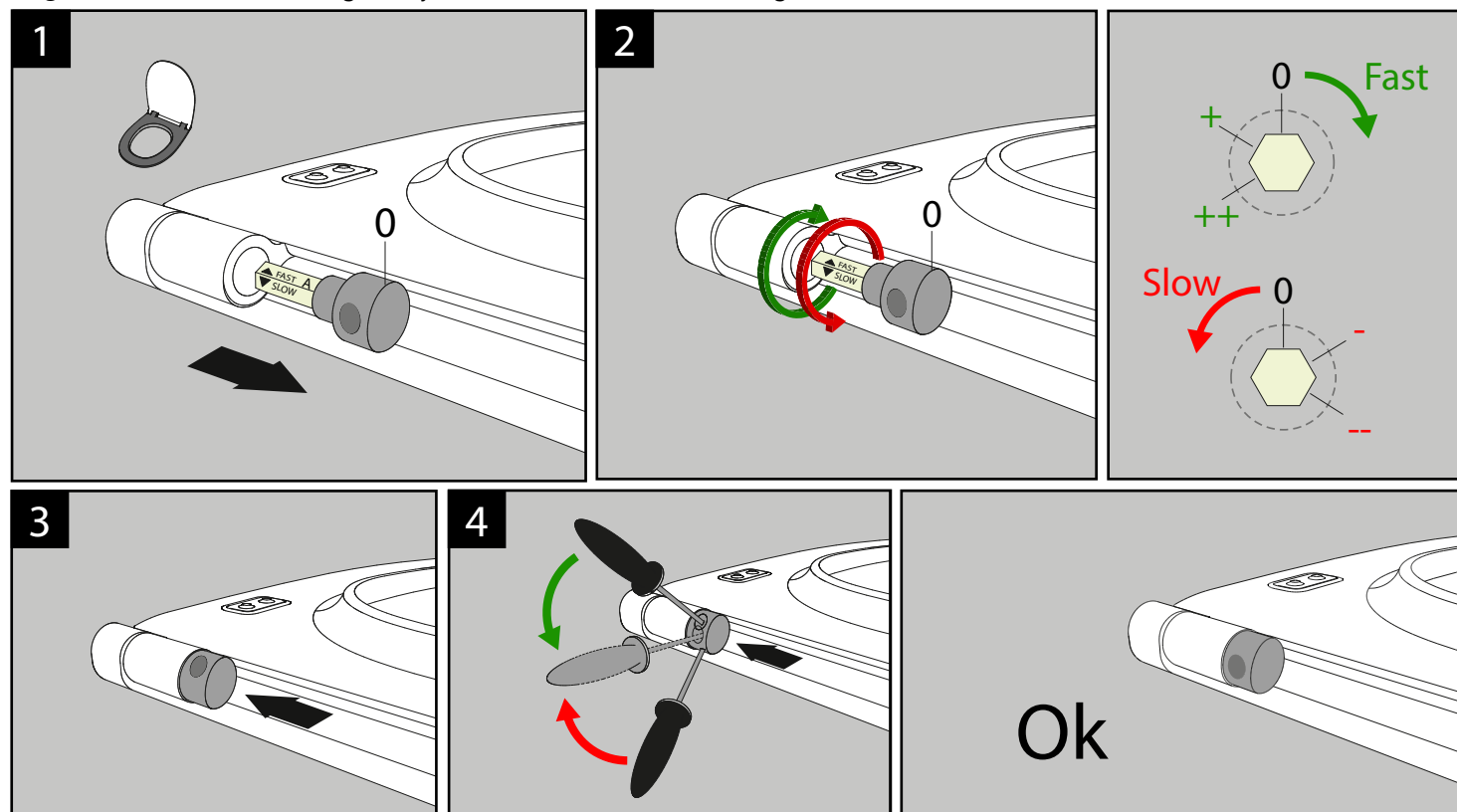
Bitte den QR-Code scannen für das
Montageanleitungsvideo



Sostituzione cerniere, posizione standard / Replacement hinges, standard position / Ersatzscharniere, standardposition



Regolazione cerniere / Hinges adjustment / Scharniereinstellung



Il procedimento illustrato nelle figure (1-2-3-4) è valido per entrambe le cerniere; destra e sinistra

The procedure illustrated in the figures (1-2-3-4) is valid for both hinges; right and left

Das in den Abbildungen (1-2-3-4) dargestellte Verfahren gilt für beide Scharniere; rechts und links