

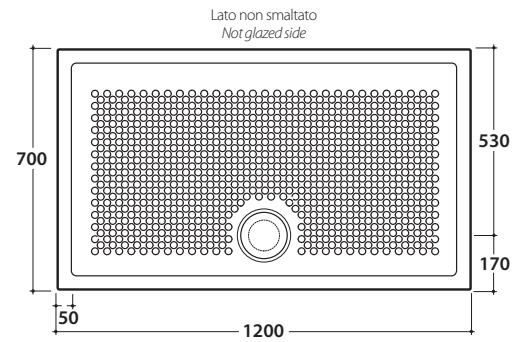
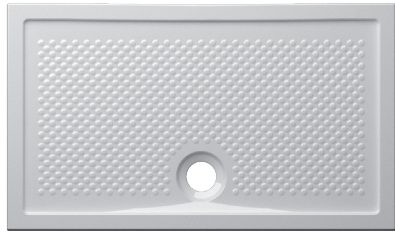
DOCCIATIVA SHOWER TRAY DV121BI

CE EN 14527:2016

DIN 51097

Slip resistance at an angle of 19° according DIN51097

GLOBO



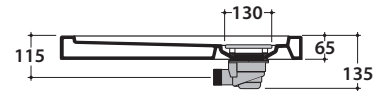
Ceramic antibacterial effect
BATAFORM®



Glazed product with
CERASLIDE®

Cod. **DV121BI**

Ceramic shower tray 70 x 120 h6,5 cm. Sit-on or floor level installation.
With exhaust flow 30 l/m. Weight 41 Kg



Cod. **DS008**

Siphon drain for shower trays Ø 90. With exhaust flow 35 l/m



Cod. **DVRBI**

Ceramic siphon drain. With exhaust flow 30 l/m